

2021

Annual Report



Coralive



Table of contents

| | |
|--|----|
| Message from the Managing Director..... | 3 |
| Mission and Motivation..... | 5 |
| Fields of activity..... | 6 |
| New and ongoing projects..... | 8 |
| Financials..... | 12 |
| Looking forward to 2022! | 13 |
| Thank you to our donors and sponsors!..... | 14 |





Ahmad "Aki" Allahgholi
Founder and Managing Director

Message from the Managing Director

Dear Friends of the Ocean,

After a temporary slowdown in 2020, the new year started full of hopes and aims to get back into the water and take care of what we love the most, the underwater world with all its inhabitants.

We were quickly brought back to reality as it was impossible to enter Madagascar in January to initiate our community centered coral project together with the local NGO [Reefdoctor.org](https://www.reefdoctor.org). Environmental work during a global pandemic is very difficult and presents all sorts of challenges. Nevertheless, we had no other choice than to postpone it for one year, hoping that the travel restrictions will be lifted by then.

The first highlight was the implementation of our scientific research study on Fregate Island, Seychelles under the supervision of our Research Student Julie Pezin. With the great help of the Fregate Conservation Team and the financial support of Fregate Island and Blancpain Ocean Commitment, we managed the setup whilst shooting another short documentary about our work.

Season 20 concluded with the visit in the Maldives where our large coral nursery had to be moved to the other side of the lagoon at Maadhuni Faru. Additionally, our long standing talks to the Soneva resort group resulted in a first visit and reef assessment. This eventually brought forth the first project of Season 21, the establishment of the world's largest coral nursery for harvesting and outplanting 50'000 coral fragments per year. The first phase started in October and was the installation of 432 coral reef structures and setting up the Mineral Accretion Technology equipment.

Having a strong and experienced team is key when it comes to large scale coral restoration. Needless to say, we ended the year on a very strong note, looking forward to save potentially 1 mio coral fragments while translocating them away from a commercial dredging project.

We are back on track and in the water after the pandemic slowdown. Motivation and excitement are high and as always, we are extremely grateful of the support by anyone who donates his or her time and money to our cause. As in previous years, it ranges from individual donors, to businesses and project investors. A special thank you to our charity partners that are becoming a more important factor in sustaining our operations financially.

The continued focus will be upscaling and replicating the Soneva project so more areas of degraded reefs can be managed and repaired. We will continue to support small-scale restoration efforts where needed and try to raise more funds for mangrove reforestation and waste hub management projects.

Once again, thank you to everyone involved in our work with Coralive.org. It has been a tremendous pleasure to work with you all and I am looking forward continuing to grow and create with every single one of you.

From across the ocean, wishing you the best for a happy, healthy and successful 2022!



Ahmad Allahgholi
31.1.2022



Mission and Motivation

“Coralive's mission is to initiate a healing process of marine ecosystems, making them a healthier place again.”

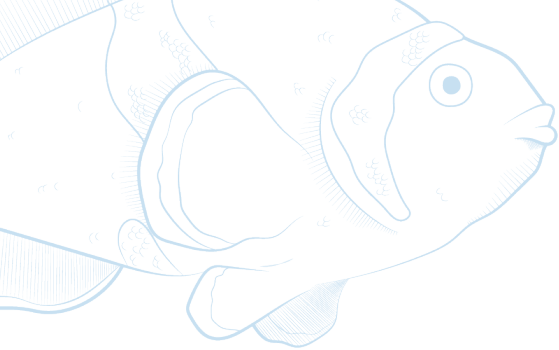
A thriving and diverse coral reef is the foundation of a healthy ocean.

Through coral restoration, we actively increase coral cover and reestablish the ecosystem of which twenty-five percent of all marine life depends upon. With healthy fish and benthic life, abundance and diversity is increased and leads to reefs that are more resilient as well.

Further, erosion of coastal regions is diminished, as reefs act as natural wave attenuation systems. Food security for artisanal fishing families is maintained with increased biomass of reef fish and opportunities for tourism activities are created.

Our coral restoration approach is called the mineral accretion technology (MAT). It increases growth rates, survival rates and resilience of transplanted coral fragments with the support of electric stimulation.”





Fields of activity



Environmental Restoration

Coralive.org provides global best practices to catalyze the healing process and increase the ecosystem resiliency of shorelines against future disturbance.

- Coral Reef Restoration through Mineral Accretion Technology;
- Large scale coral translocations;
- Mangrove nurseries & reforestation;
- Seagrass bed transplanting;
- Living breakwater installations.



Marine Protected Areas

Coralive.org brings local stakeholders together to design, establish, and manage these vital refuges in nature.

- Creation & Implementation of MPA Management Plans;
- Installation of Cutting-Edge Technical Support Systems;
- Surveillance & Enforcement Training.



Environmental Data Collection

We use the latest available technology to perform underwater mapping, aerial surveying and multi-parameter water quality analysis.

- Ocean 3D Mapping (High-Definition Bathymetry Geophysical Survey & Photogrammetry 360 Virtual Models);
- Environmental Impact Assessments;
- Long-Term Ecological Monitoring (pH Levels, Dissolved Oxygen, Temperature, Salinity, and Pollution Levels);
- Installation of Smartbuoys for live monitoring.



Livelihood Solutions

Coralive.org has expertise in planning and implementing such projects to ensure all voices are heard and all needs are met.

- Solid Waste Management including Waste Hubs with Eco-Brick production facilities;
- Seaweed Farming and low-impact Aquaculture.

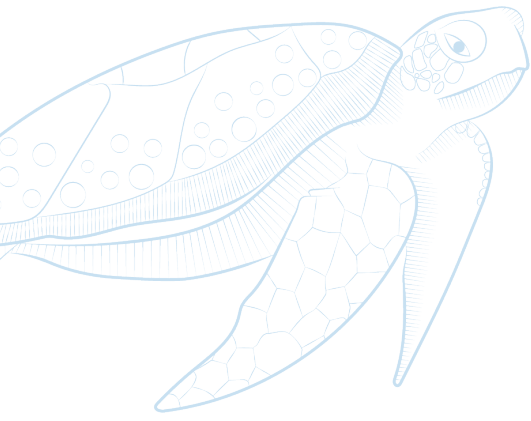


Environmental Education

Coralive.org's final and perhaps most significant area of focus is the proper transfer of knowledge and experience to local residents in project areas and to the next generation.

- Plastic Pollution Awareness Campaigns;
- Coral Reef, Mangrove Forest & Sea grass Education;
- Cleanup Events;
- Video productions.





New and ongoing projects

Soneva Fushi, Maldives

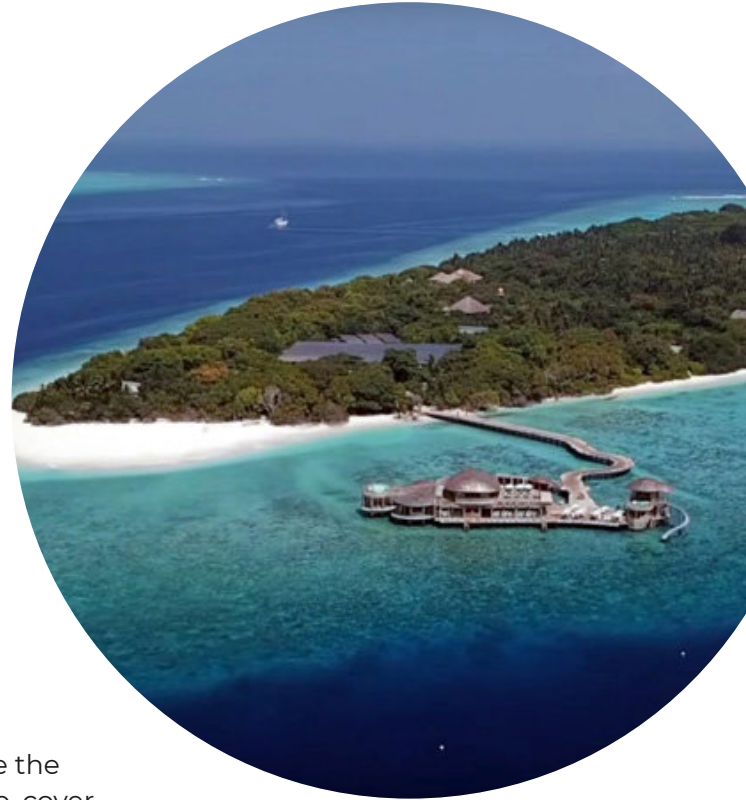
Project initiation: October 2021 - New Project

Together with the unique [Hotel Soneva Fushi](#), we have launched the ambitious programme to restore coral reef systems and create a coral hub for the Maldives. A partnership between the [Soneva Foundation](#) and the global ecosystem restoration organization [Ark2030](#), the project aims to protect and regenerate the vital marine habitat by installing one of the world's largest in-situ coral nurseries to produce over 50'000 coral fragments to be returned into the wild.

The ultimate aim of the programme is to regenerate the reef back to the state in which it existed 25 years ago, covering out-planted corals across 40 hectares over the next decade. Located at the outer edge of the house reef, the coral nursery at Soneva Fushi will comprise 432 table structures, arranged in three circular clusters.

The project is divided into three distinct phases: the initial installation phase, where the tables and nursery infrastructure will be placed into the water, expected to take up to three months; a two- to three-month population phase, which will include scouting for donors and creating a detailed database to record taxonomy, growth and survival rates; and the third, ongoing maintenance and monitoring phase to ensure the health of the corals, monitor predation and verify that the MAT equipment is fully functional.

Each table structure will be given its own unique code, where coral growth rates and health are recorded twice a year. We finished the year by installing the complete infrastructure and then send the team to a well deserved New Year's break.





Fregate Island, Seychelles

Project initiation: May 2018 - Ongoing, Phase II

In cooperation with [Fregate Island Sanctuary](#) and the support of [Blancpain Ocean Commitment](#), phase two of our project will take coral restoration to the next level. The key factors in doing so are scalability, efficient logistics, sustainable energy production and usage.

We decided to launch a research project (first of its kind) to study the positive effects of Mineral Accretion Technology (MAT). All was documented in the film produced by [Daniel Bichsel](#) and [Chris Keller](#) to show our team's mission in supporting the regrowth of corals and resilience build-up and to understand electrical stimulation of corals during 12hrs (day) vs. 12hrs (night) vs. 24hrs vs. a control setup.

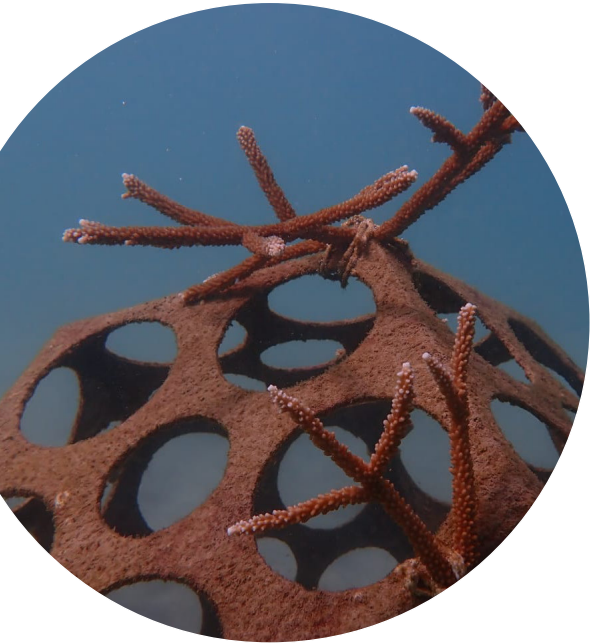
Jakarta, Indonesia

Project initiation: May 2021 - New Project

This is a first of its kind project for Coralive in collaboration with [Solgaard](#) as main sponsor, [Greeneration](#), [Ecorangers](#) and [Rebricks](#) to support a sustainable waste management system.

The funds are providing for machinery and infrastructure to process waste into economic value goods, which can be used within a circular economy system through efficient composting and upcycling heavily degraded plastics into so called rebricks.





Portobelo, Panama

Project initiation: November 2020 - Ongoing

The Panama Pilot in collaboration with [Boskalis](#) (NL) and in collaboration with the local NGO Reef2Reef aims to compare, under identical conditions, four artificial reef types that have been designed based on different design philosophies: active (MAT) versus passive (non-MAT) systems, as well as modular versus non-modular designs.

The designs include Boskalis' designed Endless Reef units, Coralive's minidomes, ReefSystems MOSES units and ReefBall units. In this pilot, we collaborate with Reef2Reef, [Commercial Diving Panama](#) and the [Maritime University of Panama](#) to seek effective coral habitat restoration techniques in the face of coral reef decline in Panama.

Shimoni, Kenya

Project initiation: May 2019 - Ongoing

A project in cooperation with the [University of Wageningen](#), NL and the local NGO [Reefolution](#) in Shimoni, with the focus on scientific research on coral restoration and Mineral Accretion Technology.



North Malé Atoll, Maldives

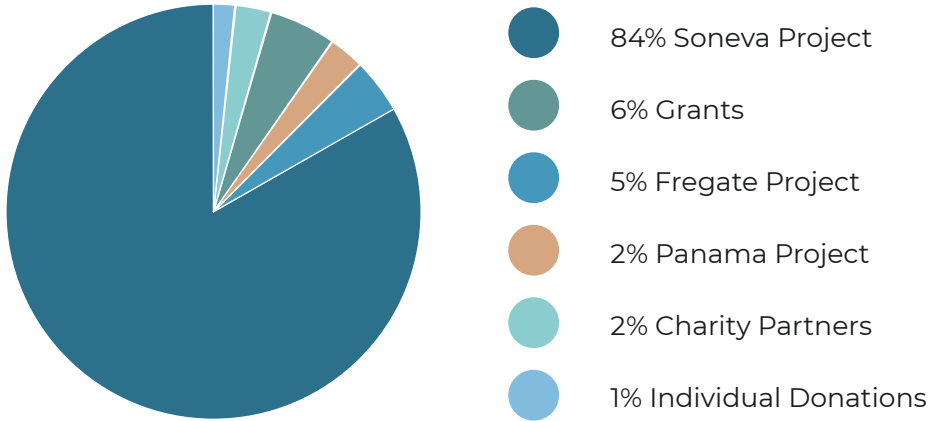
Project initiation: May 2018 - Ongoing

The Maldivian project is our biggest one and prime example on how we approach large scale coral restoration of highly degraded reef areas. We continue to maintain the 65 structures in our nursery that host between 8000 – 10'000 fragments and nearly 250 structures at the restoration site totaling about 15'000 fragments.

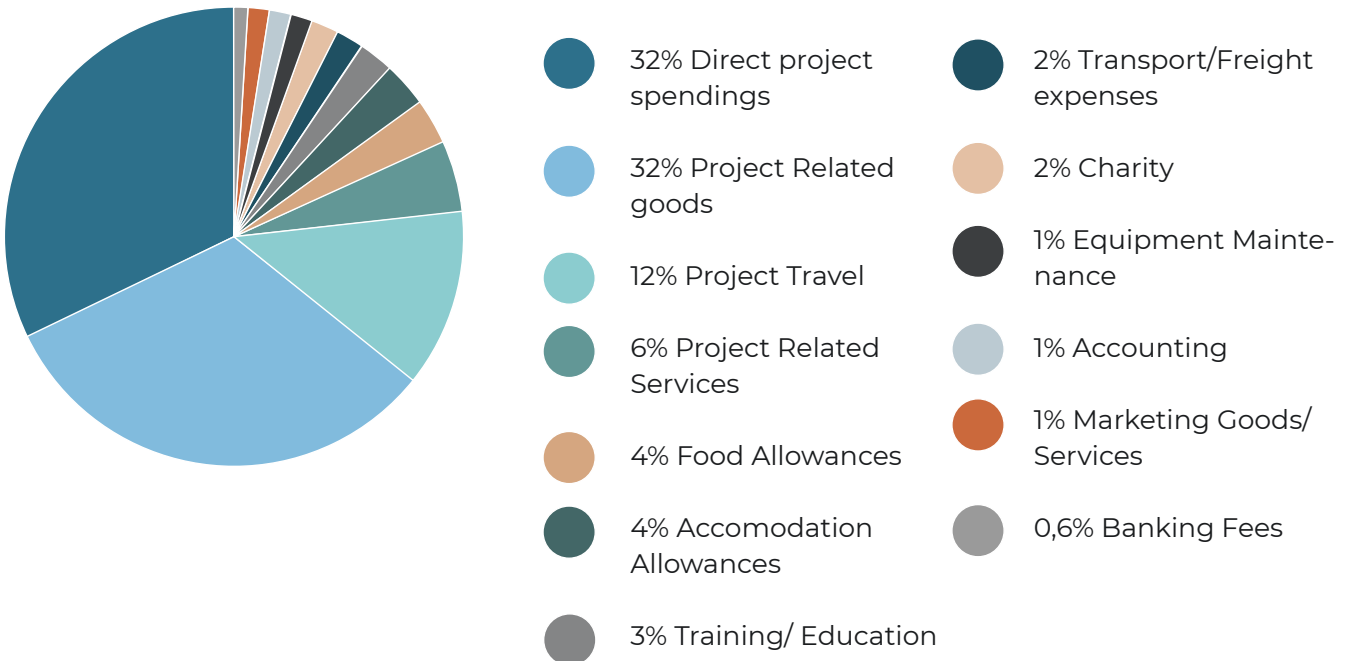


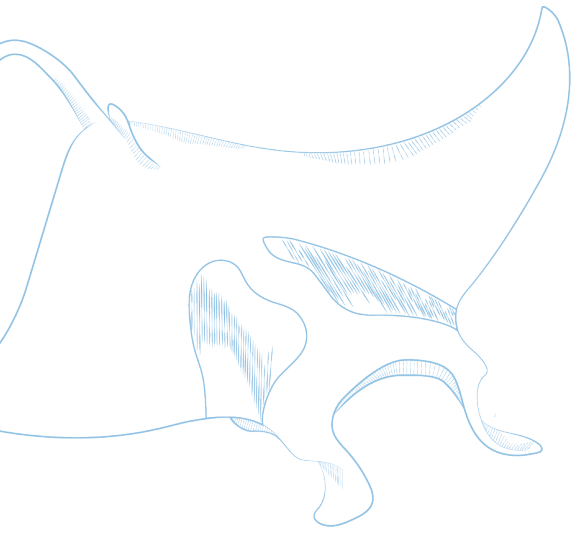
Financials

Income



Expenses





Looking forward to 2022!

Q1 of 2022 will be marked by new experiences, namely the translocating coral colonies away from dredging sites to bring them to locations where they are safe and can continue to grow and propagate.

We will further implement other projects in the Maldives and go back to our Seychelles project to collect and analyze the final data sets. The project in Madagascar is still high on our to-do list, hopefully will take place in April. The long outstanding project in Malapascua, Philippines should also finally be implemented in October 2022.

Further in the pipeline are the replication of large-scale coral nurseries like the one at Soneva Fushi, opening the marine education and research center and large scale coral translocations in the Maldives and potential further coral projects in Costa Rica, Sri Lanka and Raja Ampat, Indonesia.

Stay in touch and keep checking our social media for the latest news and updates!



Thank you to our donors and sponsors!

Coralive.org couldn't do this without their help! We deeply appreciate all donations from individuals, charity and project partners to support our work helping to nurture and restore this marine environment to its full potential. Please keep in mind that all financial donations made by Swiss Citizens, Associations and Companies will receive a confirmation for tax deduction purposes.

US Financial Donations greater than 50'000 US\$ will receive a confirmation for tax deduction purposes through our association with the Tides Foundation, a registered 501(c)(3) nonprofit.

Coralive.org compensates all flights through CO2 certificates managed by myclimate.org.



Contact

Coralive.org
Zürcherstrasse 161
P.O. 100042
8010 Zürich – Switzerland
+41 44 586 8663
info@coralive.org

Bank

Postfinance, Bern, Switzerland
Coralive.org, 4058 Basel, Switzerland

Accounts:

CHF: CH25 0900 0000 8985 5337 6
EUR: CH90 0900 0000 1544 2281 7
USD: CH82 0900 0000 1581 8549 4

BIC / SWIFT: POFICHBEXXX

Follow Us



www.coralive.org

